

Searching Exploration Licence Documents in DIGS

Exploration Licence Documents

NSW DEPARTMENT OF PRIMARY INDUSTRIES | MINERALS

DIGS Database

DIGS > Welcome to DIGS

Welcome to DIGS

Geological Survey of NSW
Search DIGS

If you'd like to be informed about DIGS news and developments, you can join the [Mailing List](#). You can also [Contact Us](#).

Created on Monday 11th April 2011 at 14:07:40 EST
© 2011 NSW Department of Primary Industries: Mineral Resources

Click Search DIGS

The following search fields appear in the window:

NSW DEPARTMENT OF PRIMARY INDUSTRIES | MINERALS

DIGS Database

DIGS > Reports Search

Reports Search

Report Number:

Report Identification Number:

Confidentiality:

Authors/Company Name:

Report Title:

Report Description:

Subject Terms/Keywords:

Report Year:

Tenement Name/Number:

Map Sheet:

Location:

Abstract:

Document Filter:

Record Types to Search:

- Minerals
 - Mineral Exploration Reports
 - Mine Records
 - Research Reports
 - Annual Report Compilations
- Coal Exploration Reports
- Petroleum Exploration Reports
- Titles
 - Record Tracing
 - Survey Plan
 - Working Plan
 - Consolidated Lease
 - Exploration Licence Conditions
- Departmental Map Collection
 - Cartographic Maps
 - Heritage Maps
- Departmental Publications
- Environmental Reports
- Bibliographic Retrieval System

Results per page: 50

Search

Created on Tuesday 21st December 2010 at 12:48:40 EST
© 2010 NSW Department of Primary Industries: Mineral Resources

The following fields may be used to locate Exploration Licence Documents for Exploration Licences, Petroleum Exploration Licences and Authorisations.

Report Number: EL, PEL or AUTH Number
E.g. EL1111, PEL111, AUTH111

Report Title: EL, PEL or AUTH Number, Act, Project, Company Name
E.g. EL1111 Act1992, Acme, Acme Pty Ltd

Tenement Name: Original Application/Part Transfer Number
EL, PEL or AUTH Number
E.g. ELA 2222 Act1992 or Auth111 Act1973 Part Transfer
EL1111 Act1922

Location: Parish, County
E.g. PARISH: COORUMBUNG AWABA, COUNTY: NORTHUMBERLAND

Abstract: Current Licence Documents
E.g. Current Coal Licence Documents or Current Petroleum Licence Documents

If the Exploration Licence number is known
Enter the Exploration Licence Number in **Report Number** field.

NSW DEPARTMENT OF PRIMARY INDUSTRIES | MINERALS

DIGS Database

Logged in as: english | Indexing Interface | Logout | Home

DIGS > Reports Search

Reports Search Help

Report Number: EL 6946

Report Identification Number:

Confidentiality: Either

Authors/Company Name:

Report Title:

Report Description:

Subject Terms/Keywords:

Report Year:

Tenement Name/Number:

Map Sheet:

Location:

Abstract:

Document Filter:

Record Types to Search:

- Minerals
 - Mineral Exploration Reports
 - Mine Records
 - Research Reports
 - Annual Report Compilations
- Coal Exploration Reports
- Petroleum Exploration Reports
- Titles
 - Record Tracing
 - Survey Plan
 - Working Plan
 - Consolidated Lease
 - Exploration Licence Conditions
- Departmental Map Collection
 - Cartographic Maps
 - Heritage Maps
- Departmental Publications
- Environmental Reports
- Bibliographic Retrieval System

Results per page: 50

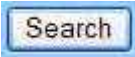
Search

Created on Friday 15th April 2011 at 11:15:44 EST
© 2011 NSW Department of Primary Industries: Mineral Resources

W3C HTML 4.01

Disclaimer | Privacy | Copyright

Click on the search button.
The search results will display as below



NSW DEPARTMENT OF PRIMARY INDUSTRIES | MINERALS DIGS Database

Logged in as: anglak | Indexing Interface | Logout | Home

DIGS > Reports Search > Search Results

Reports Search Results Help

Found 1 report that matches your criteria, from 130866 reports in database. Showing reports 1 to 1

Your search has matched 1 viewable report(s), and 0 reports that are restricted, or your confidentiality settings have filtered.

This result set contains:
1 viewable report(s), of type:

- Mineral Exploration Reports Open File
- Mine Records Open File and Confidential
- Research Reports Open File
- Annual Report Compilations Open File
- Coal Exploration Reports Open File
- Petroleum Exploration Reports Open File
- Record Tracing Open File and Confidential
- Survey Plan Open File and Confidential
- Working Plan Open File and Confidential
- Consolidated Lease Open File and Confidential
- Exploration Licence Conditions Open File and Confidential
- Cartographic Maps Open File and Confidential
- Heritage Maps Open File and Confidential
- Departmental Publications Open File
- Environmental Reports Open File

Page: 1

1.EL6946 (R17007087)

Report Title	EL6946 Act1992 East Yetman Northern Energy Corporation Limited
Report Year	N/A
Authors/Company Name	Department of Industry and Investment
Citation	Current Coal Licence Documents

Page: 1

Created on Friday 15th April 2011 at 11:19:41 EST
© 2011 NSW Department of Primary Industries, Mineral Resources

Disclaimer | Privacy | Copyright

Click on the required link to open report.
The report and associated documents are displayed

NSW DEPARTMENT OF PRIMARY INDUSTRIES | MINERALS DIGS Database

Logged in as: anglak | Indexing Interface | Logout | Home

DIGS > Reports Search > Search Results > Report Summary and Document List

Report Summary and Document List for EL6946 Help

RIN - R17007087 REPORT/DOCUMENT - EL6946 DOCUMENTS FOUND: 2

Report/Document Number:	EL6946 (Documents attached to this report are listed below)
Record Type:	Exploration Licence Conditions
Report Identification Number:	R17007087
Confidentiality:	Open File Accession Date: 15-DEC-10
Authors/Company Name:	Department of Industry and Investment
Report Title:	EL6946 Act1992 East Yetman Northern Energy Corporation Limited
Citation:	Current Coal Licence Documents
Report Year:	N/A
Subject Terms/Keywords:	Coal Coal Exploration Coal Planning Commodity Group 9, Coal Mapping, Resource
Tenement Name/Number:	ELA3221 Act1992 EL6946 Act1992
Map Sheet:	MAP 9040-2-S
Location:	PARISHES EAST YETMAN, COX & HOLMES, COUNTY ARRAWATTA
Abstract:	Current Coal Licence Documents

Select	Document Description	Code	Pages	Size	Colour	Format	File Size	Preview	Archive	Edit	Delete	
<input checked="" type="checkbox"/>	EL 6946_20100303_Renewal diagram	PLN	-	-	-	PDF	255 k	View	-	Edit	Delete	
<input checked="" type="checkbox"/>	EL 6946_20100303_Renewal	TXT	-	-	-	PDF	739 k	View	-	Edit	Delete	
Total							994 k					

Unselect All

Request Documents

Edit Report Details Change Confidentiality Add File Delete Report

Created on Friday 15th April 2011 at 11:36:10 EST
© 2011 NSW Department of Primary Industries, Mineral Resources

Disclaimer | Privacy | Copyright

To view documents before downloading Click [View](#) at the end of the requested document or diagram.

Select	Document Description	Code	Pages	Size	Colour	Format	File Size	Preview	Archive	Edit	Delete
<input checked="" type="checkbox"/>	EL 6946_20100303_Renewal diagram	PLN	-	-	-	PDF	255 k	View	-	Edit	Delete
<input checked="" type="checkbox"/>	EL 6946_20100303_Renewal	TXT	-	-	-	PDF	739 k	View	-	Edit	Delete
Total:							994 k				

Click Open

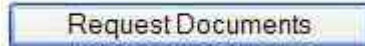


The document will open.

You can also save individual documents after clicking [View](#)

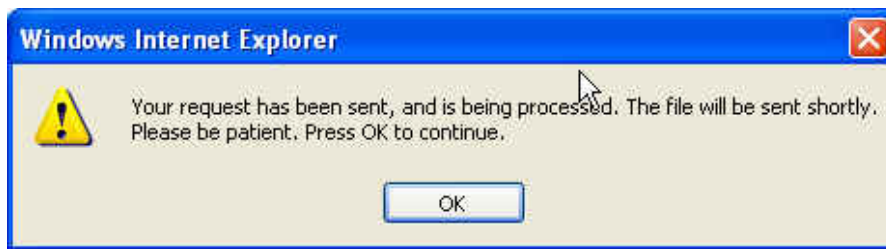
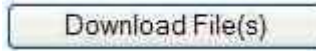
Instead of selecting Open **Click** Save.

To download all associated documents **Click** the Request Documents button.



The Download window appears

Click the Download File(s) button
Click OK

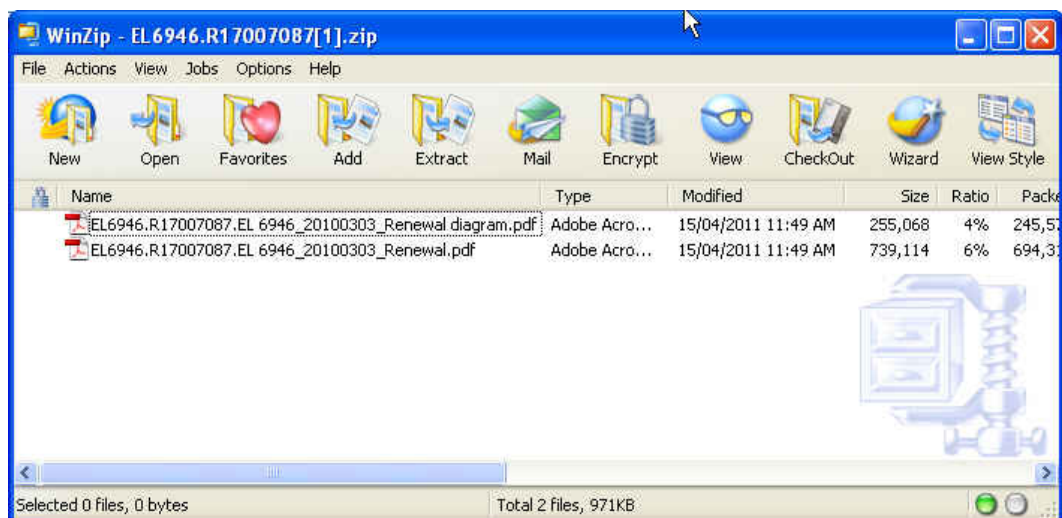


Open Procedures

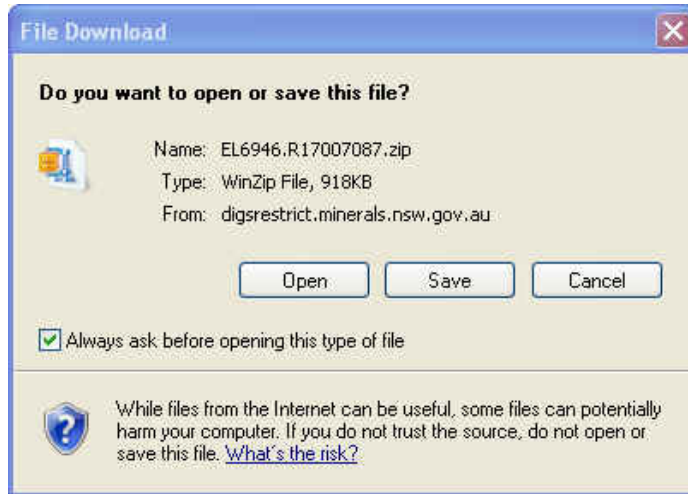
To open files **Click** Open button.



When the Open button is selected the files transfer to WinZip window.



Double Click on pdf and **Click** Open view document.



Save Procedures

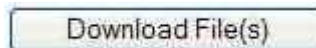
To download all associated documents **Click** the Request Documents button.



The Download window appears

Output Format	Original Format	Document Description	Pages	Total Size	Preview
PDF	PDF	EL 6946_20100303_Renewal diagram	-	255 k	View
PDF	PDF	EL 6946_20100303_Renewal	-	739 k	View
Total				994 k	

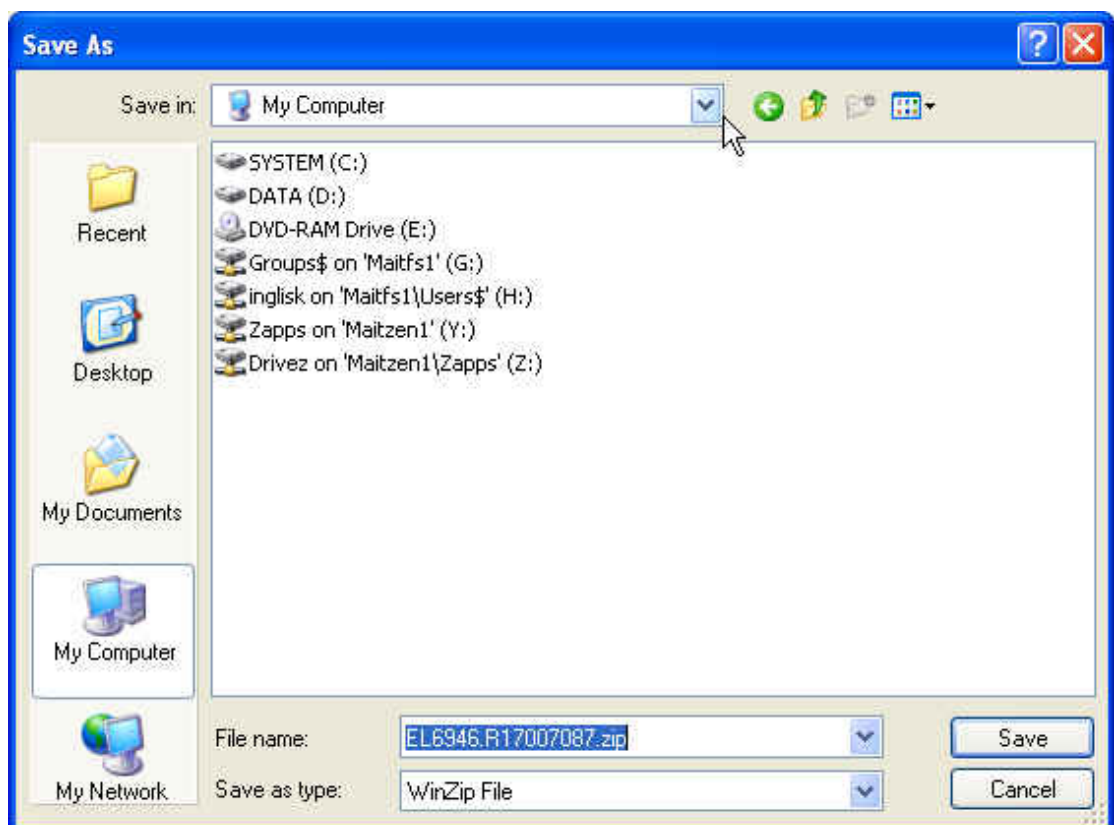
Click the Download File(s) button
Click OK



To save files **Click** Save Button.



When the Save button is selected the documents are saved to a WinZip file for later use.



Filename Abbreviations

Abbreviation	Name
CHN	Change of Name
ES	Endorsement Schedule
ES_CHN	Endorsement Schedule Change of Name
ES_EAO	Endorsement Schedule Exempted Area Operations
ES_PCN	Endorsement Schedule Part Cancellation
ES_SRV	Endorsement Schedule Security Review
ES_TFR	Endorsement Schedule Transfer
ES_PTF	Endorsement Schedule Part Transfer
PCN	Part Cancellation
PTF	Part Transfer
REN	Renewal
SRV	Security Review